

TRACKLINK® P₂P – NSCD Applications

PRODUCT OVERVIEW

The TRACKLINK® P₂P is designed for use as a point-to-point (P₂P) solution for the monitoring and control of remote devices.

The TRACKLINK® P₂P Controller utilises the plant isolation capabilities of the TRACKLINK® RTU, combined with built in processor and modem equipment to provide a low cost solution for remote I/O.

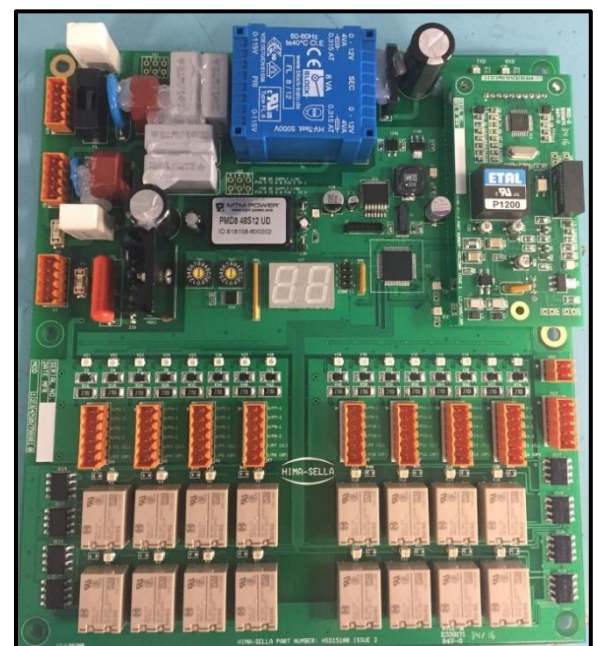
Designed on a single platform, the TRACKLINK® P₂P Controller can control several circuit breakers from a single configuration or provide remote monitoring of plant. The standard unit includes:

- Powerful Universal Processor
- Modem Module
- 5KVA Plant Isolation
- Local & Remote Configuration Options
- 32 I/O Configurable Channels

Traditionally the architecture for remote devices is based on a point to-point configuration. This requires a master unit installed in the substation and a slave unit installed near to or within the track device enclosure.

The functionality of the TRACKLINK® P₂P enables the slave unit to be installed up to 6Km from the master unit without the addition of modem equipment. The unit is supplied in an IP66 housing pre wired to keyed connectors (Power, Communications & Plant). This allows the installation contractor to pre wire cables to the plant ahead of the final equipment installation and commissioning.

This version of the TRACKLINK® P₂P Controller has been developed for the specific control of Negative Short Circuiting Devices (NSCD). In this application the equipment facilitates the remote installation of an NSCD Local Control Panel.



TRACKLINK[®] P₂P – NSCD Applications

TECHNICAL DATA

Local Unit Options:		
HSD16000/16/AL:	32 I/O CH Aluminium Housing	Network Rail Catalogue No 0062/025044
HSD16000/16/A/W:	32 I/O CH Aluminium Housing (5m flying lead)	Network Rail Catalogue No 0062/025045
Remote Unit Options:		
HSD16000/16/ST:	32 I/O CH Steel Housing	Network Rail Catalogue No 0062/025046
HSD16000/16/ST/W:	32 I/O CH Steel Housing (5m flying lead)	Network Rail Catalogue No 0062/025047
Plant Wetting Supply Option:		
48V Plant Wetting Power Supply Option		
Modem Options:		
Lease Line, PSTN or Fibre (Modem Support)		
Voltage Range:		
30-72V dc, 110-230V ac		
Isolation:		
5KVA		
EMC Certification:		
BS EN 50121-4		
Environmental Certification:		
BS EN 50125-3		
Operating Temperature:		
-25°C to +55°C		
Size - Local:		
280 (H) x 230 (W) x 110 (D) mm		
Size - Remote:		
300 (H) x 280 (W) x 90 (D) mm		
IP Rating:		
IP Rating: 66		
Mounting:		
Standard four point fixing (to match existing install)		